

SOI SYSTEMS



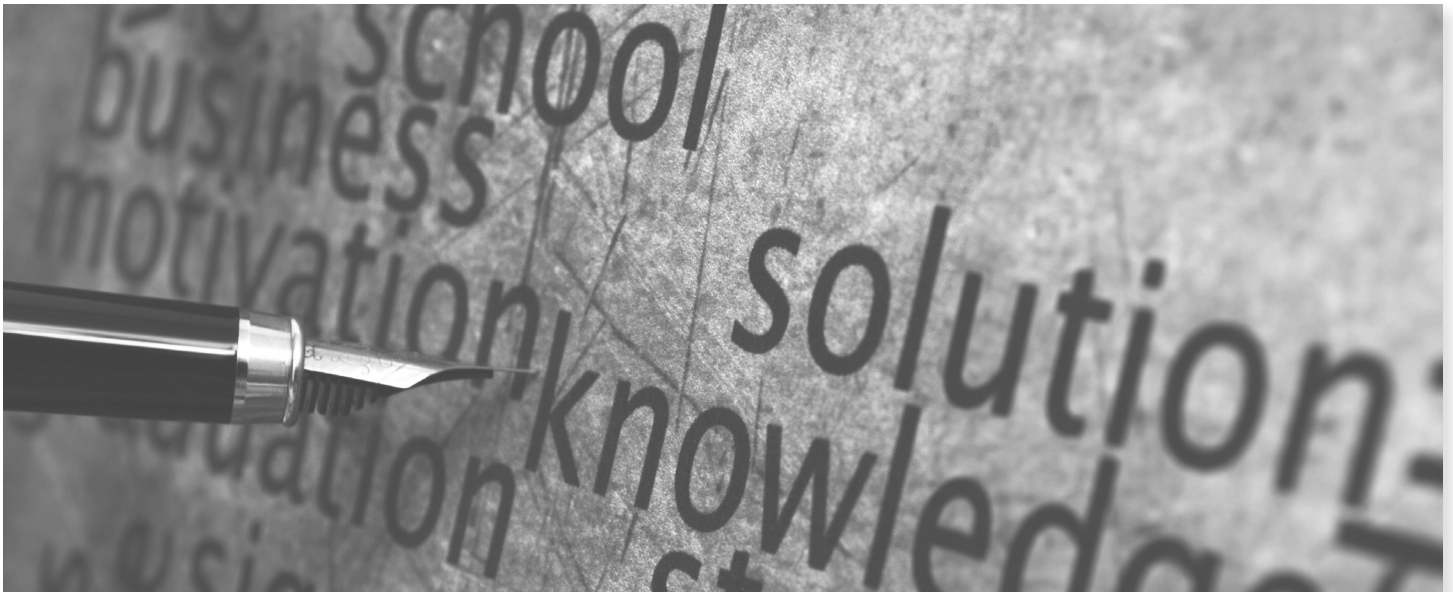
USING SOI TO HELP
YOUR STUDENTS LEARN

ABOUT US

WE KNOW THAT LEARNING CAN BE HARD, AND WE'RE HERE TO HELP CHANGE THAT.

We work with every type of person in every learning situation – parents, students, teachers, individuals, special education instructors, tutors, and more. Our focus is always on the learners and what we can do to make them successful. We have:

- tests that profile learning ability strengths and weaknesses
- materials to improve and strengthen learning abilities
- innovative programs designed specifically to assist struggling students to get them back on track
- screening products for gifted and talented programs
- managed programs that provide students with the very best educational foundation



CONTACT US

web soisystems.com | email soi@soisystems.com | phone 541.746.5602

IPP: INTEGRATED PRACTICE PROTOCOL

DEALING WITH THE CAUSES OF POOR ACADEMIC PERFORMANCE



IPP identifies the root causes of learning difficulties and develops an individualized training plan for each student. Cognitive abilities, sensory motor functions, and focusing skills are all addressed.

WHEN STUDENTS CONNECT TO LEARNING, EVERYONE WINS.



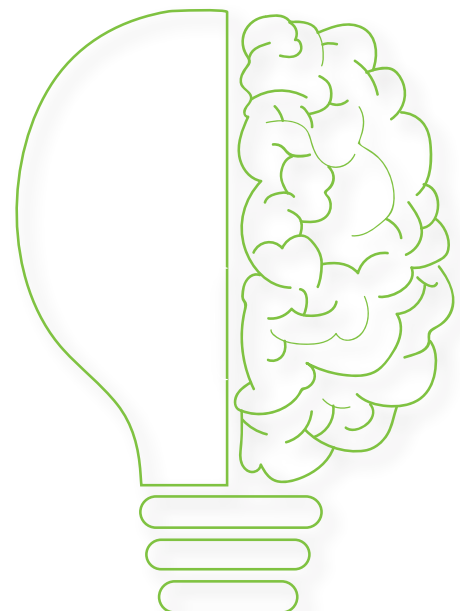
IMPROVE SENSORY MOTOR FUNCTIONS

AVAILABLE FOR ALL GRADES!

Learning is dependent on more than just the teacher and the curriculum.

It depends on the student and his or her ability to learn. The IPP program enables learners to become quality students.

- VISUAL & AUDITORY PROCESSING
- ATTENTION SPAN
- VERBAL COMPREHENSION
- COMPARISON & CONTRAST THINKING
- EYE-HAND COORDINATION
- SKILLS ESSENTIAL TO THE LEARNING PROCESS



CERTIFIED LEARNING

1 HOUR + 3 LEARNING CENTERS = MAJOR SUCCESS



CONTINUOUS PROGRESS DESIGN



TUTORIAL STYLE INSTRUCTION

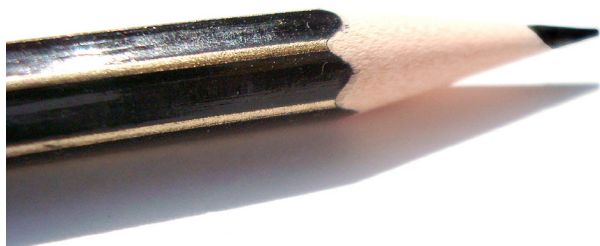
WATCH YOUR STUDENTS THRIVE WITH INDIVIDUALIZED EDUCATION.

Certified Learning employs a tutorial model of instruction designed for classroom-size groups. It covers the basic curriculum – reading, math, and science concepts – for kindergarten, first grade, and second grade.

It also teaches foundational abilities and skills that are necessary (but often lacking) for learning the content curriculum.



PREPARING STUDENTS FOR MORE ADVANCED CURRICULUM



Certified Learning builds a foundation for academic success by teaching the intellectual abilities needed for productive learning.

LEARNING DISCOVERY

LEARNING PREPARATION FOR PRESCHOOL STUDENTS



Preschool is the best time to prepare for learning by mastering the fundamentals of cognition, memory, evaluation, and problem-solving.

For about 1 hour per day, students work on Learning Discovery materials in the classroom under a teacher's guidance.

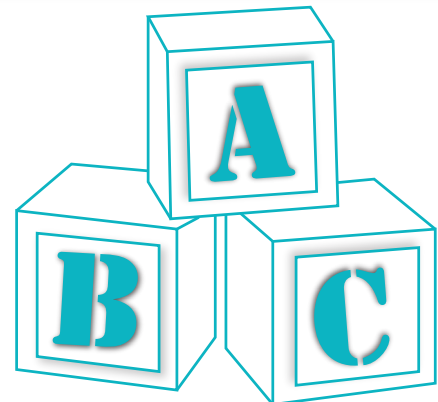
- SEQUENTIAL THINKING
- COORDINATION
- FOCUSING SKILLS
- PROCESSING ABILITIES
- VISUAL PROCESSING SKILLS
- MOTOR SKILLS
- AUDITORY ATTENDING
- SENSORY-INTEGRATION
- SELF-CONTROL
- PATTERNING



CREATE A LEARNING FOUNDATION FOR YOUR PRE-K STUDENTS

Learning Discovery is designed to build the cognitive and perceptual strengths that empower students to transition from the concrete stage to the symbolic comprehension required in elementary school.

Comprehension is essential for success in reading, language arts, and arithmetic.



SOI TESTS CAN BE USED IN ALL
SCHOOL SETTINGS FROM GRADES
KINDERGARTEN - ADULT.

THESE TESTS ARE OFTEN USED FOR
BOTH SPECIAL EDUCATION AND
GIFTED PROGRAM SELECTION.

ASSESSMENTS & ANALYSES

SOI tests are a great way to get a snapshot of your students' learning abilities and to see their learning potential. Find out what areas - such as comprehension, evaluation, problem-solving, or memory - may be causing learning difficulties, and see what areas are already strong.

FORM CR

The Form CR is appropriate for grades 3 to adult. Twenty-six separate abilities are tested in the areas of cognition, creativity, problem solving, memory, and evaluation. A gifted screening portion of the test can also be administered.

FORM L

The Form L is appropriate for ages 4 through 9. Eleven different learning abilities in the areas of cognition, memory, problem solving, and evaluation are tested. We recommend this test for all young students who can read.

FORM ALA

The ALA is for third graders - adults. It is available in paper and online format, and tests 30 separate learning abilities, including a critical thinking portion. You must be trained at the Intermediate level to administer this test.

FORM PLA

The PLA is appropriate for kindergarten - third grade students. It is available in both paper and online format, and tests 14 separate learning abilities. You must be trained at the Intermediate level to administer this test.

CREATIVITY SHORT FORM

This test is appropriate for second grade and above. It tests for creativity with things; words and ideas; and math and symbols. It is a great option for screening for highly capable & gifted programs.

FORM RR

The Form RR is appropriate for pre-kindergarten to 1st grade. It tests basic reading & arithmetic skills, fine motor functions, and vision. We recommend this test for young students still unable to read.



BRIEF ANALYSIS

This 2 - 3 page analysis provides a brief summary of the test results using different graphs.
available for the Form CR, Form CR Gifted Screening, Form L, Creativity Short Form

EDUCATIONAL ANALYSIS

This in-depth analysis provides detailed information on learning ability strengths and weaknesses, and includes suggestions on how to improve them.
available for the Form CR, ALA, Form L, and PLA

PRE/POST ANALYSIS

This short analysis summarizes the progress that a person has made between SOI testings.
available for the Form CR, ALA, Form L, and PLA

CAREER ANALYSIS

This analysis produces a profile of learning abilities for the client that are compared to the abilities required for specific careers.
available for the Form CR and ALA

PERSONALIZED LEARNING

These workbooks and CDs are designed based on each person's test scores. Low abilities will be strengthened and high abilities will be further advanced.

PERSONAL WORKBOOK

A workbook contains approximately 150 pages and is completely self-contained with introductory materials and answer keys for each module presented. It trains the abilities that need the most attention first.

PERSONAL CD

A personalized CD also trains abilities that need the most attention. It has the modules in computer form for the student to use again and again. Available in Windows or MAC format.

PERSONAL WORKBOOK/CD COMBO

Purchase a personalized workbook and CD combination to receive a discount on both products. Having both products available is a nice option so that the student or client has two different ways to improve his or her abilities!



GIFTED PROGRAMS

THE SOI ADVANTAGE

SOI testing is multifaceted - many abilities are tested.

Multifaceted tests are important because there are many aspects to intelligence and people are intelligent in different ways.

You want a test that is sensitive to these differences.

Each test produces a profile of the student's intellectual abilities. It identifies the areas in which the student is gifted, near-gifted, above average, average, below average, etc.

If a student just misses your cut-off criteria, the profile tells you how you can help the student improve.

WHAT MAKES YOU GIFTED?

We tend to equate giftedness with academic achievement, but there are gifts and talents in other areas, too.

Consider the areas of school leadership, social leadership, and interpersonal relationships.

SOI can be advantageous in testing abilities for the student who is gifted in areas that not only pertain to academic achievement, but also:

- analytical thinking
- creativity
- judgment
- evaluation
- problem solving
- critical thinking

Students who demonstrate a propensity in arts, music, dance, and drama may be overlooked for their gifted areas, as well.

GIFTED PROGRAM SELECTION

When you test a group of children to screen for the gifted, the expectation for the normal population is that 3% to 10% of the students will be selected.

What about the 90+% who were not selected?

The profiles for these children are just as valid diagnostically, telling you where they have strengths and where they need help to become better learners.

Conferences with parents of the near gifted can be made positive! Instead of saying "I'm sorry, your child missed the cut-off by three points," you are able to let parents know that there is help available for their student. SOI offers training to enhance the near-gifted learning ability areas.

STARTING A GIFTED PROGRAM

Before implementing a program in your school, there needs to be a pre-determined set of guidelines.

1. Decide on how many students can be in the program based upon your school population.

Example: the total number of 3rd grade students in your school is 125. You would like 10% of those students to be eligible for the gifted program, so there would need to be 12 students who qualify.

2. Set a pre-qualification list.

3. Use multiple selection tools. List the selection tools so that parents are satisfied that various "tests" are used for gifted qualification.

THE GIFTED STUDENT, THE AVERAGE STUDENT, AND EVERY OTHER STUDENT CAN BENEFIT FROM SOI TESTING.



HELPHYOURSTUDENTS BECOMEBETTERLEARNERS.